

RBL01

RECESSED LED BACK LIGHT



LUMIDENSE

Professional Lighting Solutions Partner

TECHNICAL SPECIFICATION

Housing: Aluminum Housing.

Protection: IP20.

Light Shade: Opal PS diffuser, 120 LM/W.

Rendering Index: CRI > 80

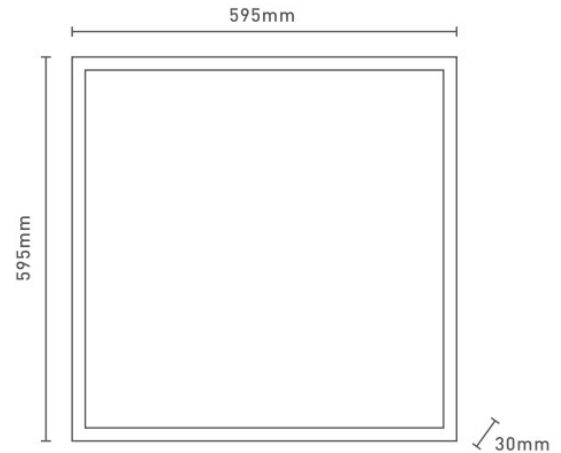
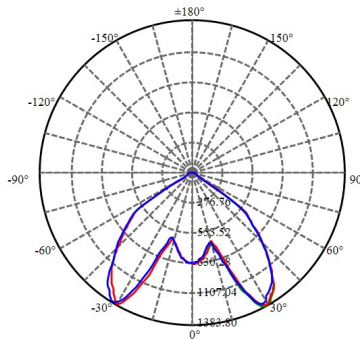
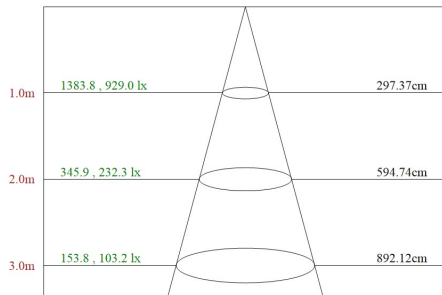
Available CCT: 3000K, 4000, 6500K.

Light Source: SMD2835

Lifetime: 30,000 Hrs 25C. 5Y warranty.



PHOTOMETRIC DATA



ORDERING INFORMATION

FAMILY SIZE	MAX WATTAGE	OUTPUT LUMEN	OUTER SIZE(A,B)	HEIGHT (H)
RBL01-36	36W	4320LM	595X595MM	30MM
RBL01-40	40W	4800LM	595X595MM	30MM
RBL01-48	48W	5760LM	595X595MM	30MM

ZHONGSHAN LUMIDENSE TRADING CO LTD.

Room 2008, Yihualingfeng Building, No.38 Yuelai south Road, Shiqi district, Zhongshan city, china.
P.O.:528400,
Lumidense@lumidense.com

Foreign Sales Department:
Phone: +86 136 3111 7825
Website: www.lumidense.com
Email: paul.lan@lumidense.com

RBL01

RECESSED LED BACK LIGHT

TECHNICAL SPECIFICATION



LUMIDENSE

Professional Lighting Solutions Partner

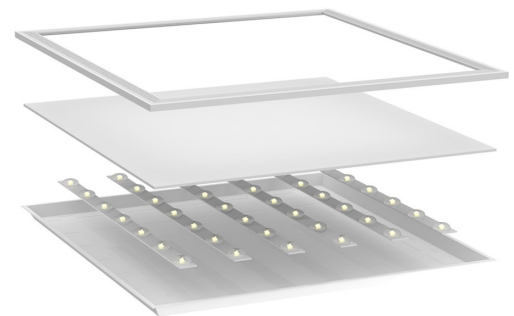
RBL01 family uses the most recent LED SMD technology to reflect high lumen package with high quality indoor back light technology range.



Backlight steel is a strong 0.35mm painted steel housing with special designed shape to make it rigid and strong.



Diffuse sheet of PMMA or PS as per request to provided even distributed light levels along with high quality aluminum frame.



ZHONGSHAN LUMIDENSE TRADING CO LTD.

Room 2008, Yihualingfeng Building, No.38 Yuelai south Road, Shiqi district, Zhongshan city, china.
P.O.:528400,
Lumidense@lumidense.com

Foreign Sales Department:
Phone: +86 136 3111 7825
Website: www.lumidense.com
Email: paul.lan@lumidense.com

RBL01

RECESSED LED BACK LIGHT



LUMIDENSE

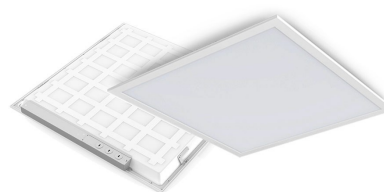
Professional Lighting Solutions Partner

TECHNICAL SPECIFICATION

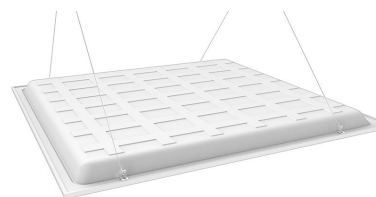
RBL01 family has many different sizes to cover almost all requirements. Starting from the standard 595x595mm size for projects and most wholesales requests till the non common sizes as 295x595mm, 295x1195mm and 595x1195mm



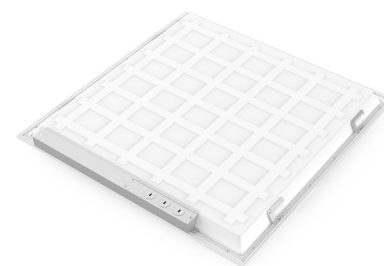
RBL01 has both types of mounting, false ceiling recessed mounting and also the concrete surface mounting style. Most of size share the same concept of dimensions.



Lumidense is providing also different kinds of accessories required for mounting in different styles and applications as ceiling pendant for surface applications and also hanging parts for recessed applications.



Surface mounted product has enough dimensions to accommodate battery backup kit for emergency lighting requirement.



ZHONGSHAN LUMIDENSE TRADING CO LTD.

Room 2008, Yihualingfeng Building, No.38 Yuelai south Road, Shiqi district, Zhongshan city, china.
P.O.:528400,
Lumidense@lumidense.com

Foreign Sales Department:
Phone: +86 136 3111 7825
Website: www.lumidense.com
Email: paul.lan@lumidense.com